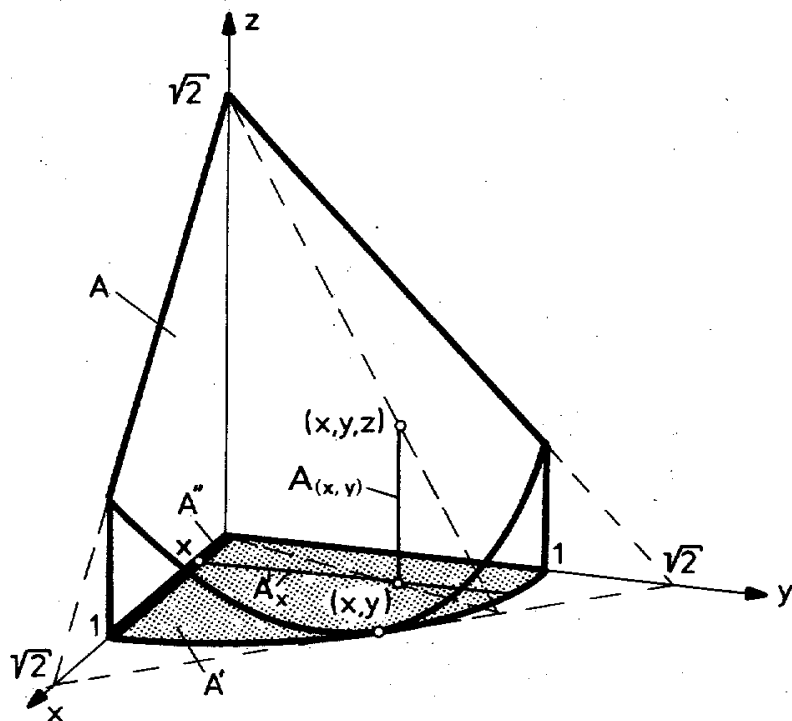
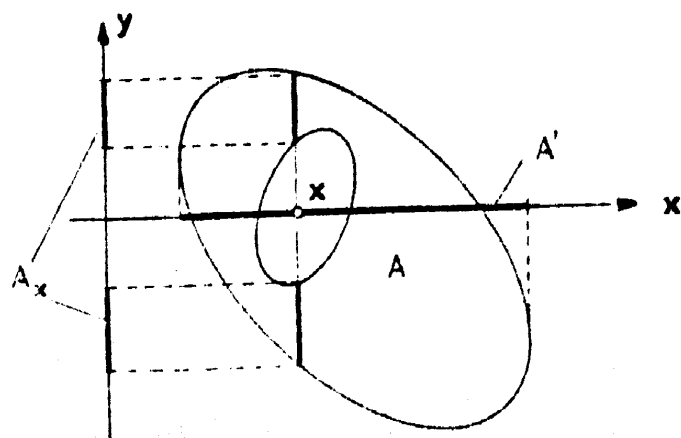
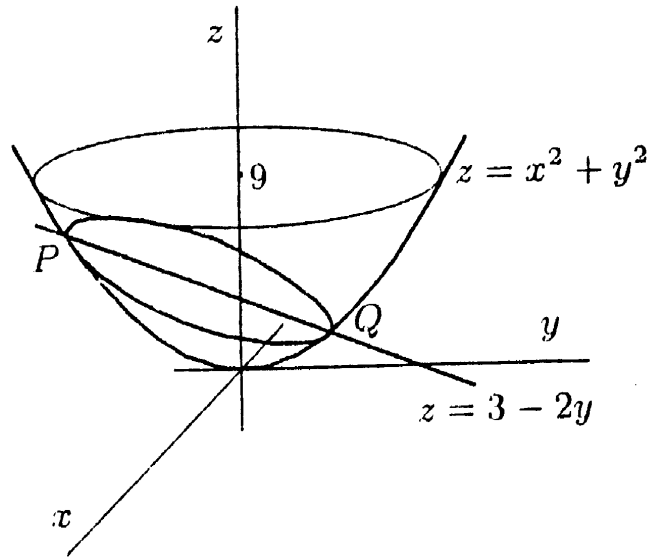


Reduktionsmethode:



$$A = \{(x, y, z) : x, y, z \geq 0, x + y + z \leq \sqrt{2}, x^2 + y^2 \leq 1\}$$



Volumen des Körpers, der unter der Ebene $z = 3 - 2y$ und über dem Paraboloid $z = x^2 + y^2$ liegt.