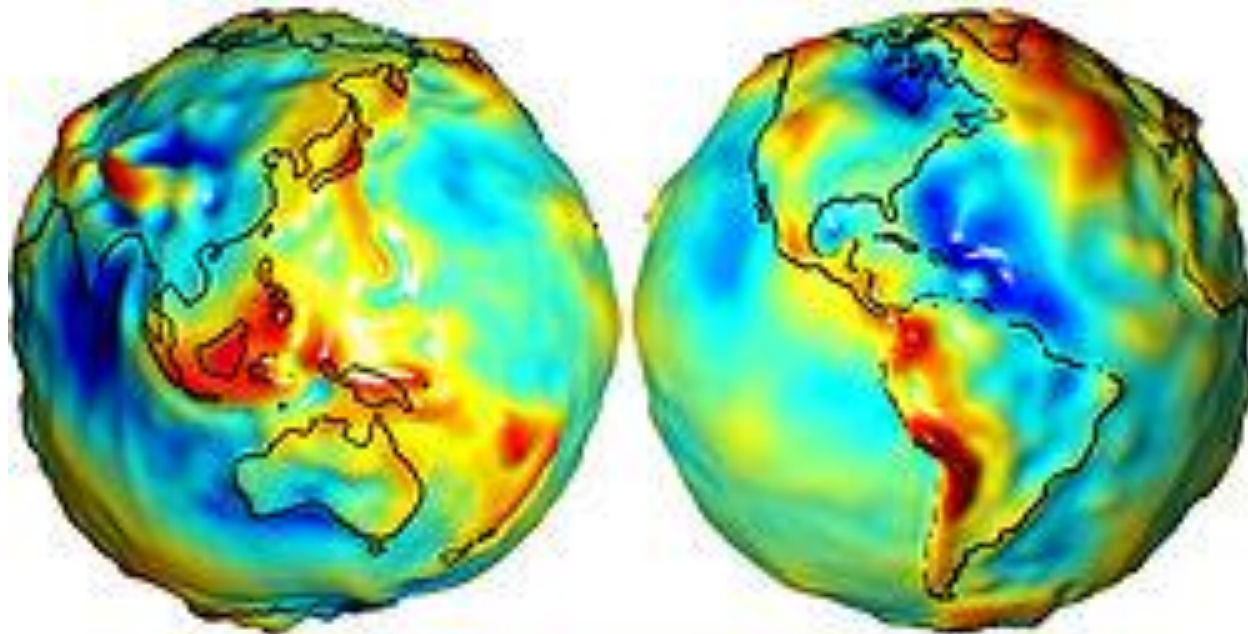


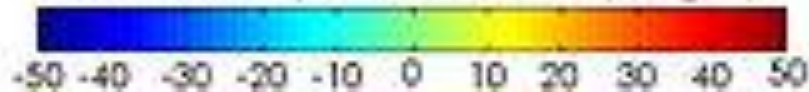


Kartografie

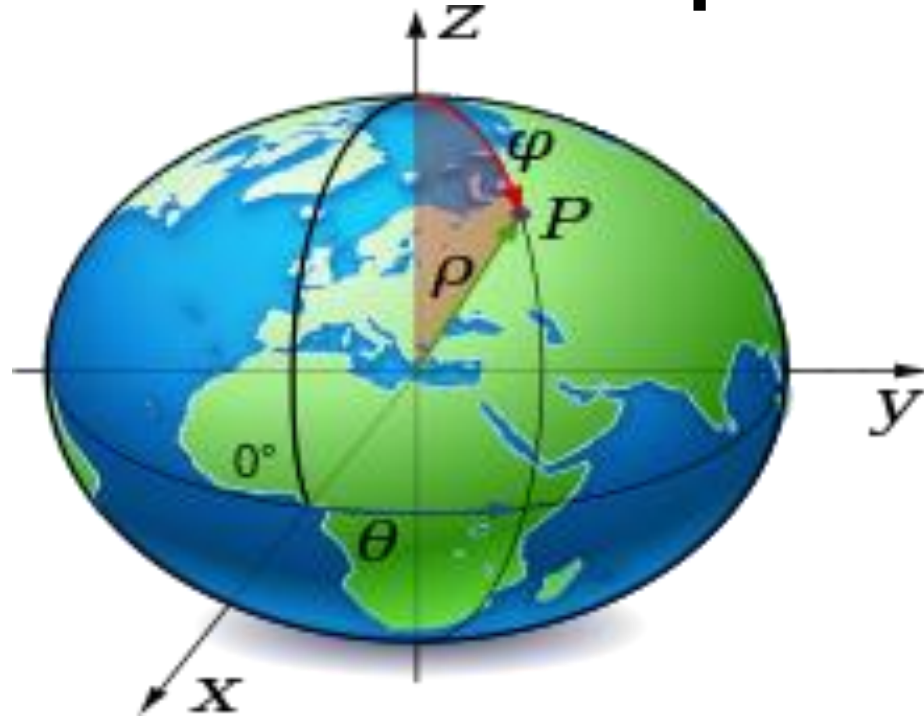
Die Erde als Geoid



Earth's Gravity Field Anomalies [milligals]



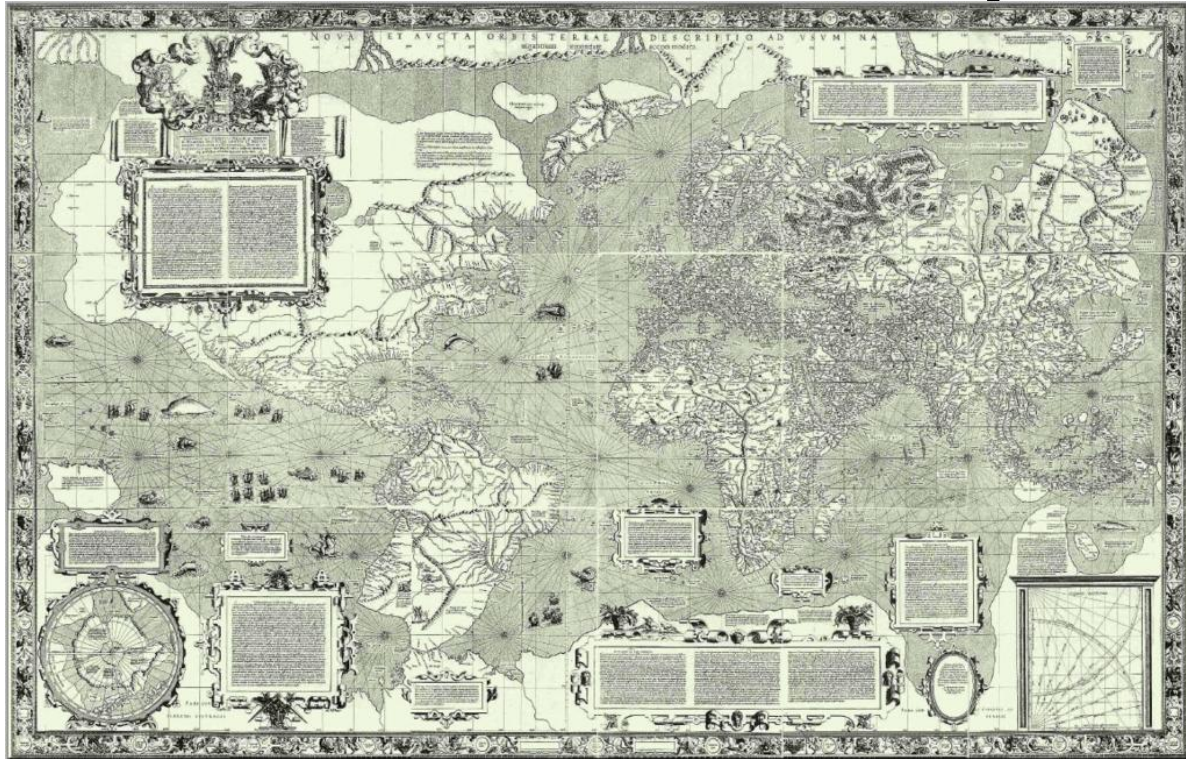
Die Erde als Rotationsellipsoid



Die Erde als Kugel



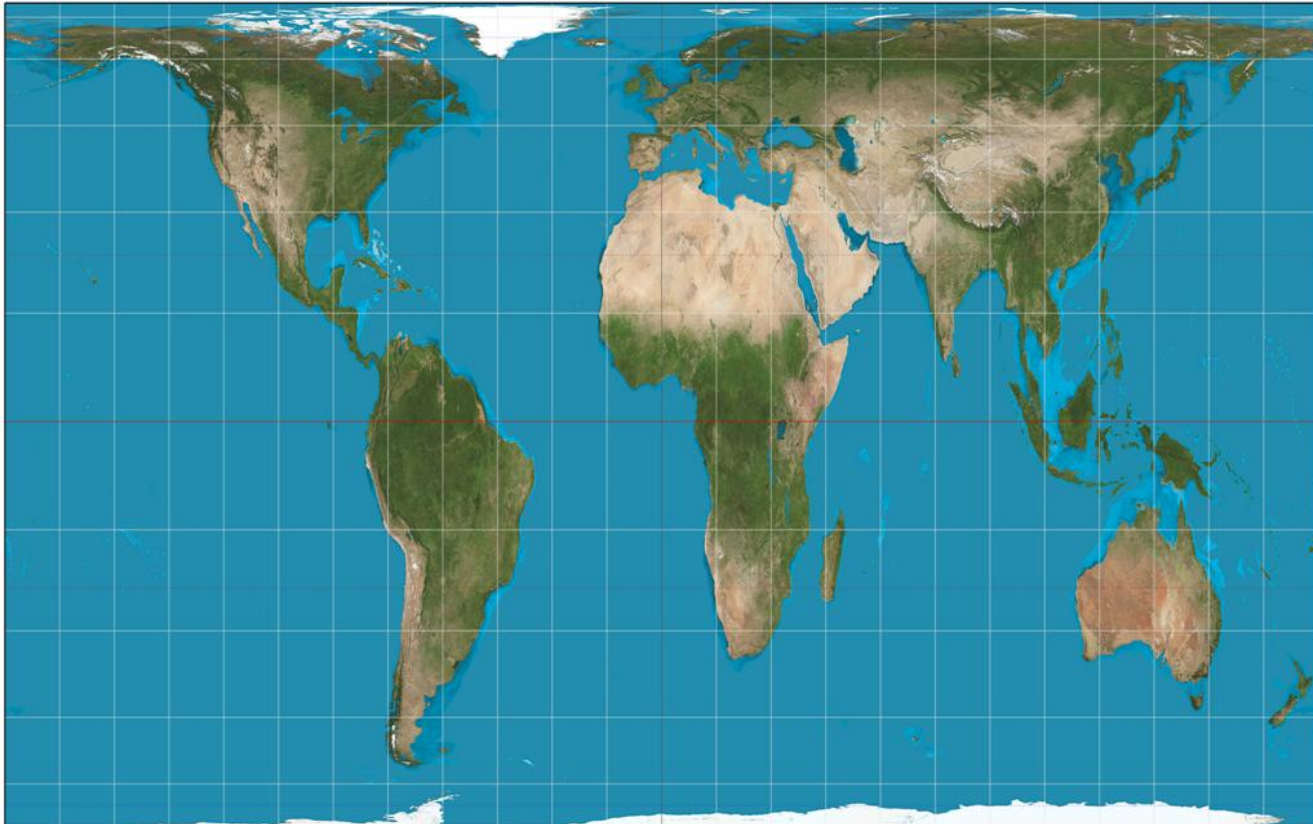
erste Mercator-Projektion



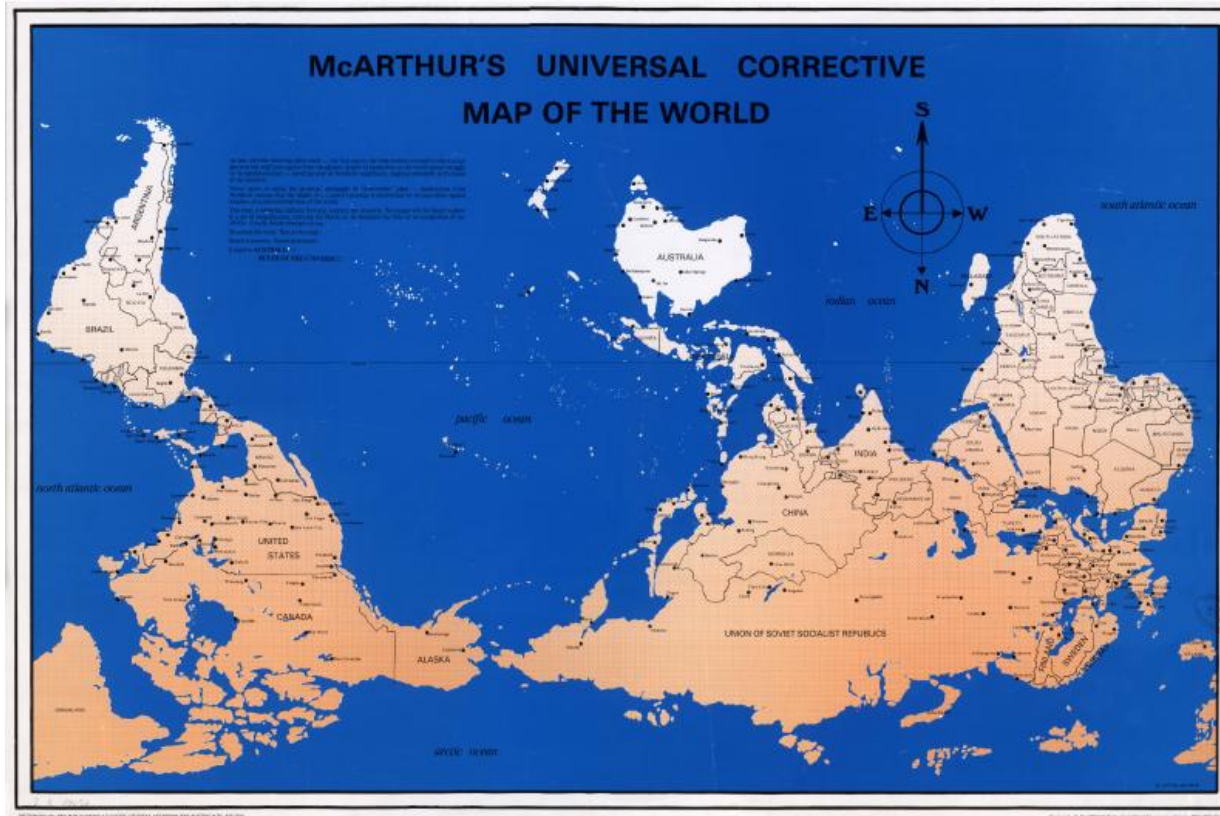
aktuelle Mercator-Projektion



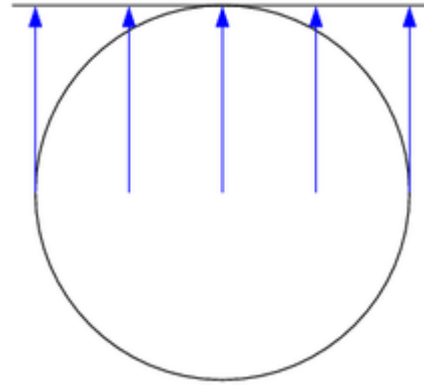
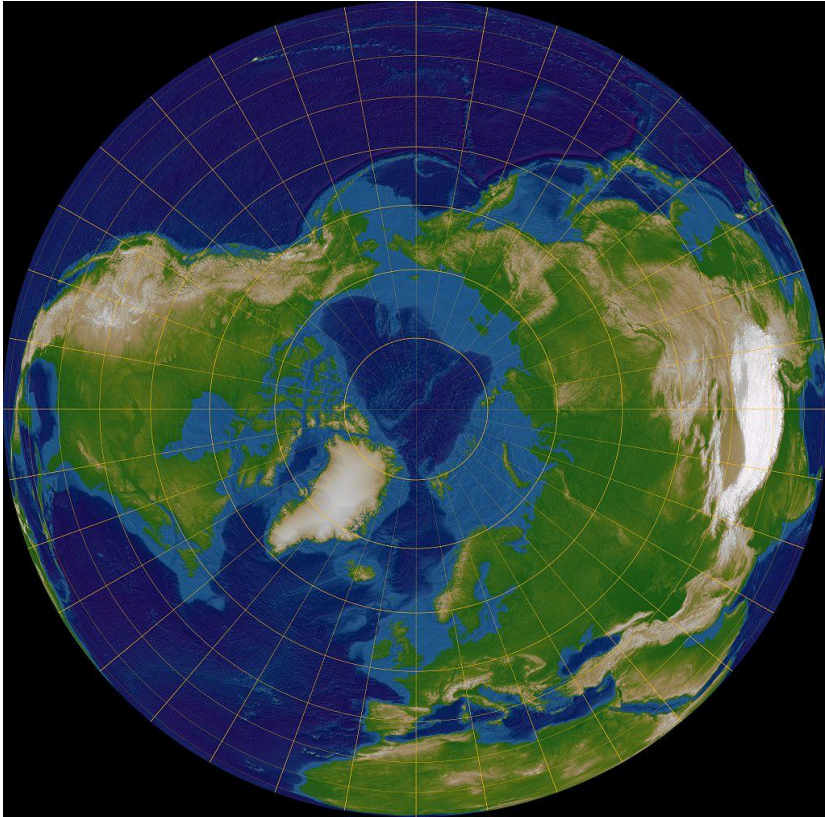
Gall-Peters Projektion



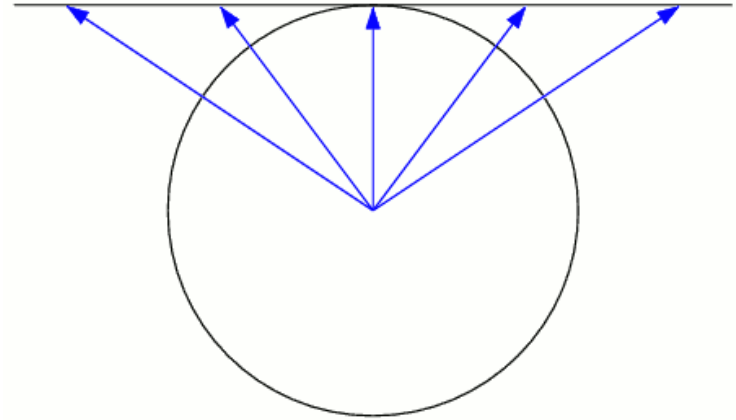
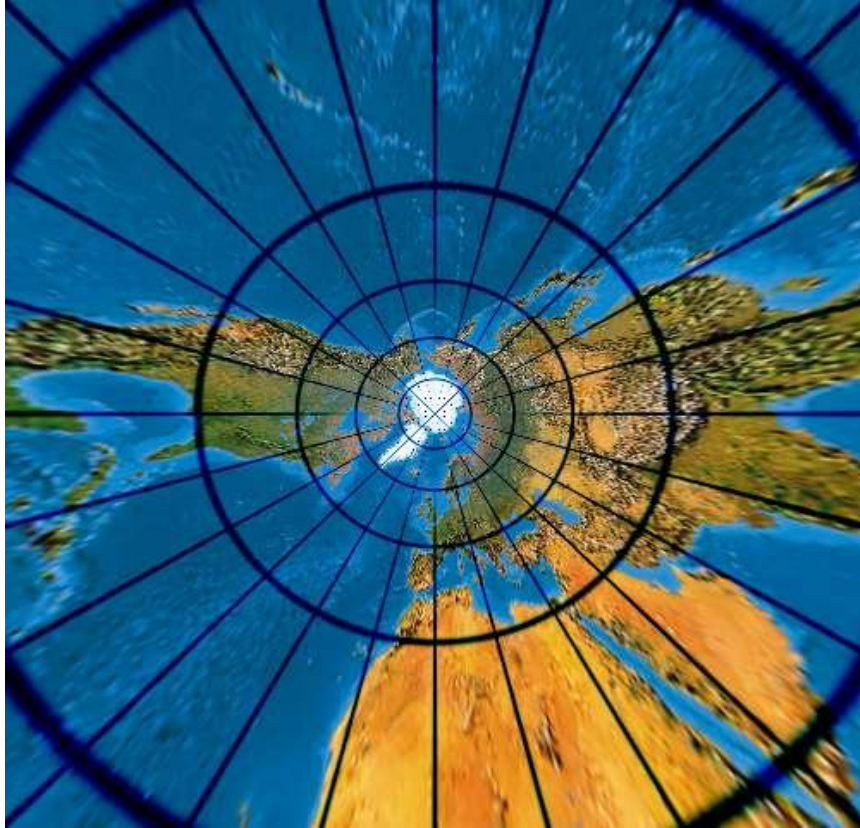
die Welt steht Kopf



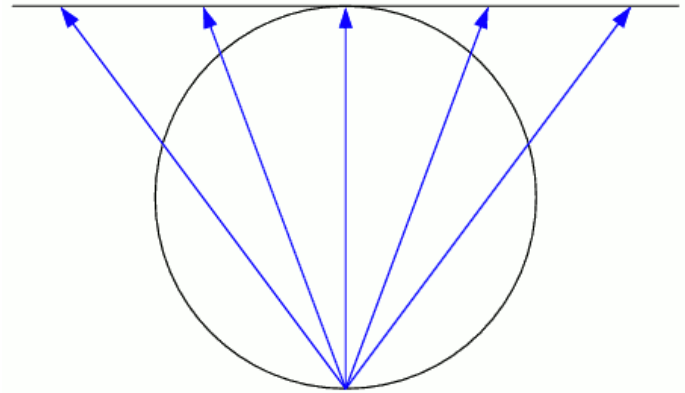
Orthografische Projektion



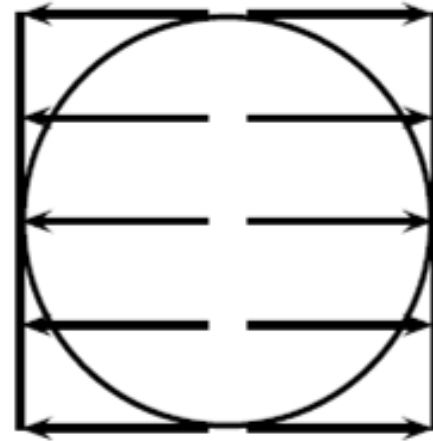
Gnomonische Projektion



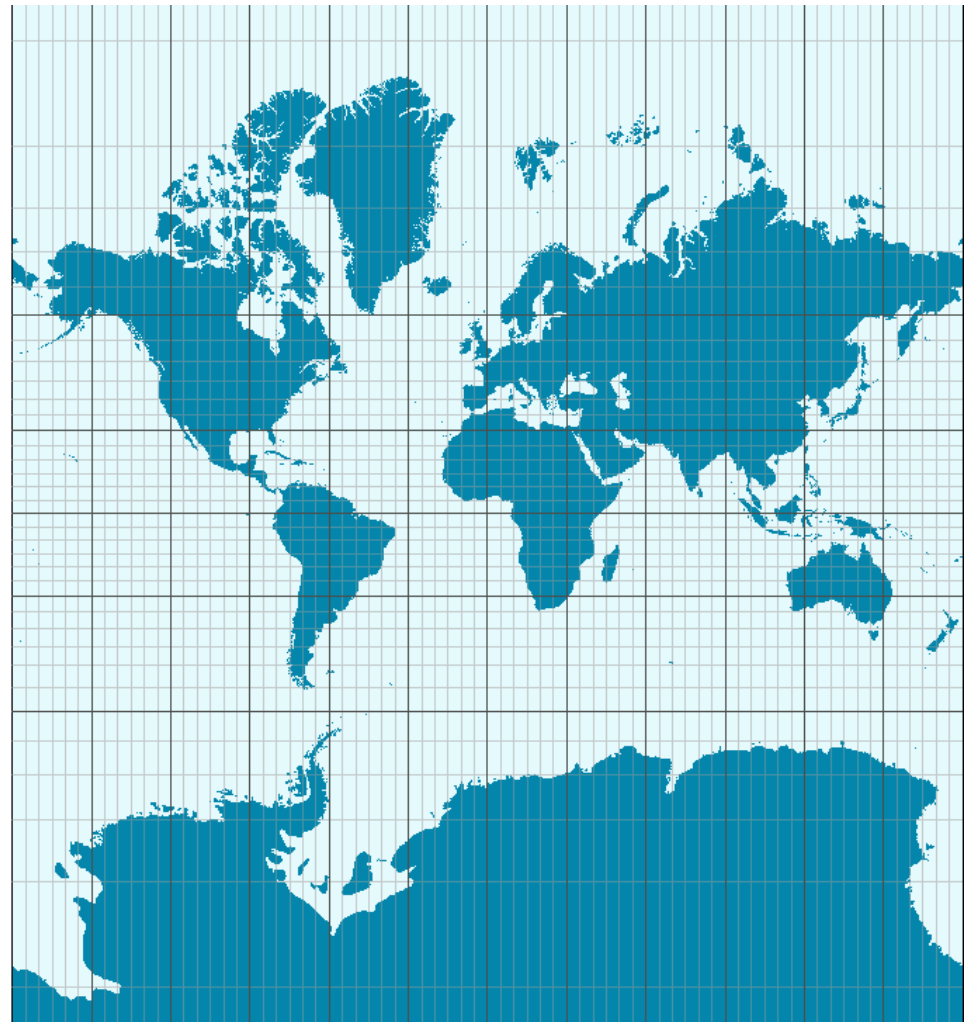
Stereografische Projektion



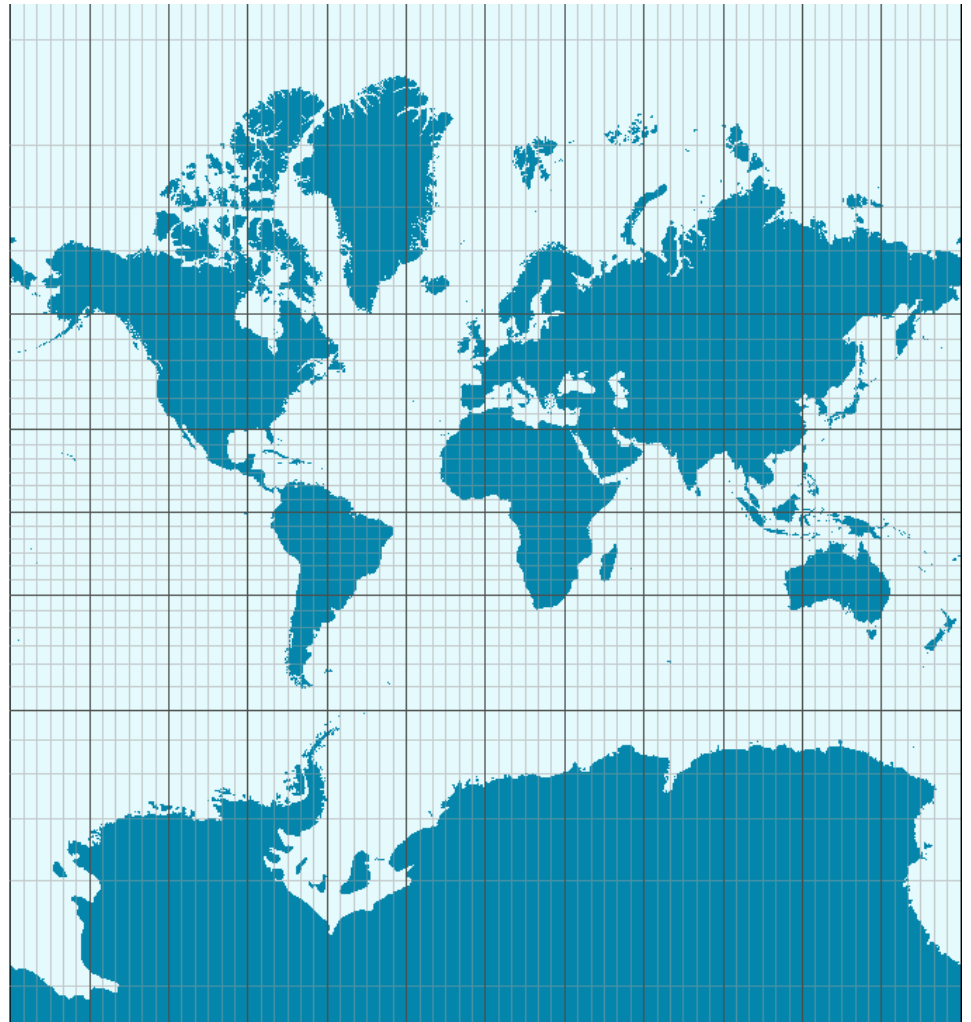
Flächentreue Zylinderprojektion



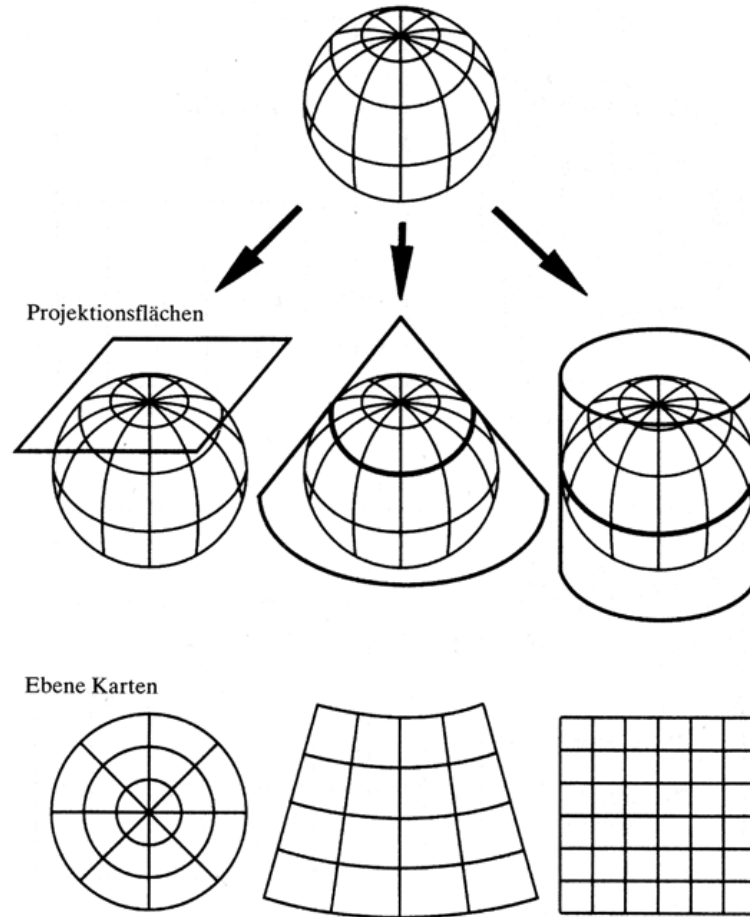
Projektion von Kremer



Mercator Projektion



Übersicht



Zusammenfassung

Karten	flächentreu	winkeltreu
Längen-Breiten-Grad	nein	nein
<u>Azimuthale Karten</u>		
orthografische	nein	nein
gnomonische	nein	nein
stereografische	nein	ja
<u>Zylinderprojektionen</u>		
Lambert	ja	nein
Mercator	nein	ja