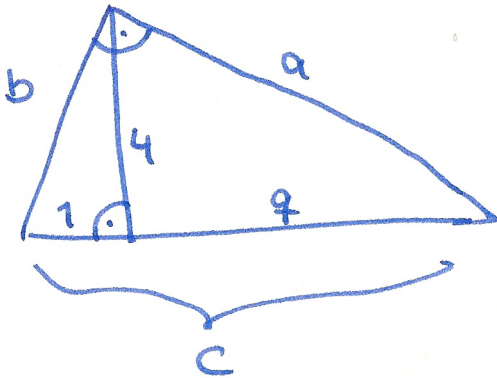


Pythagorasfamilie Ü1-Ü3
M4E

Woche
3

①



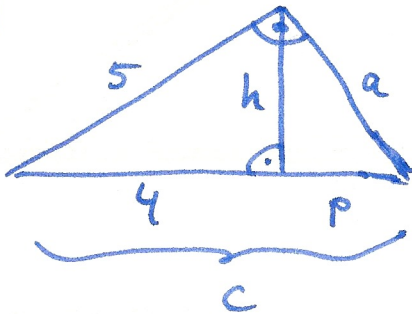
$$a =$$

$$b =$$

$$c =$$

$$q =$$

②



$$a =$$

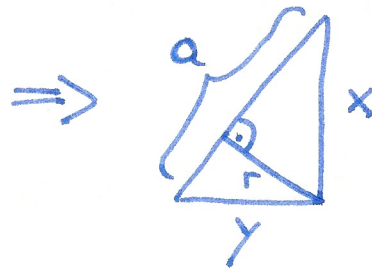
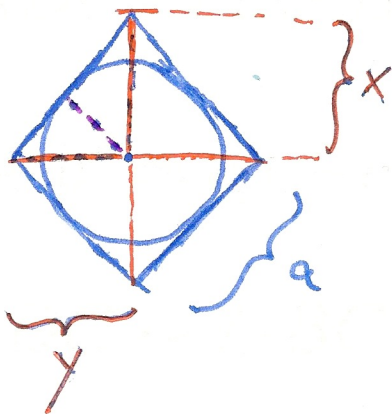
$$h =$$

$$p =$$

$$c =$$

③

Innenkreis eines Rhombus:



Drücke r in a, x
und y aus.

Hinweis: Finde zuerst
Ausdrücke für p & q ,
($y^2 = ap$, $x^2 = \dots$) und
dann $r^2 = p \cdot q = \dots$.